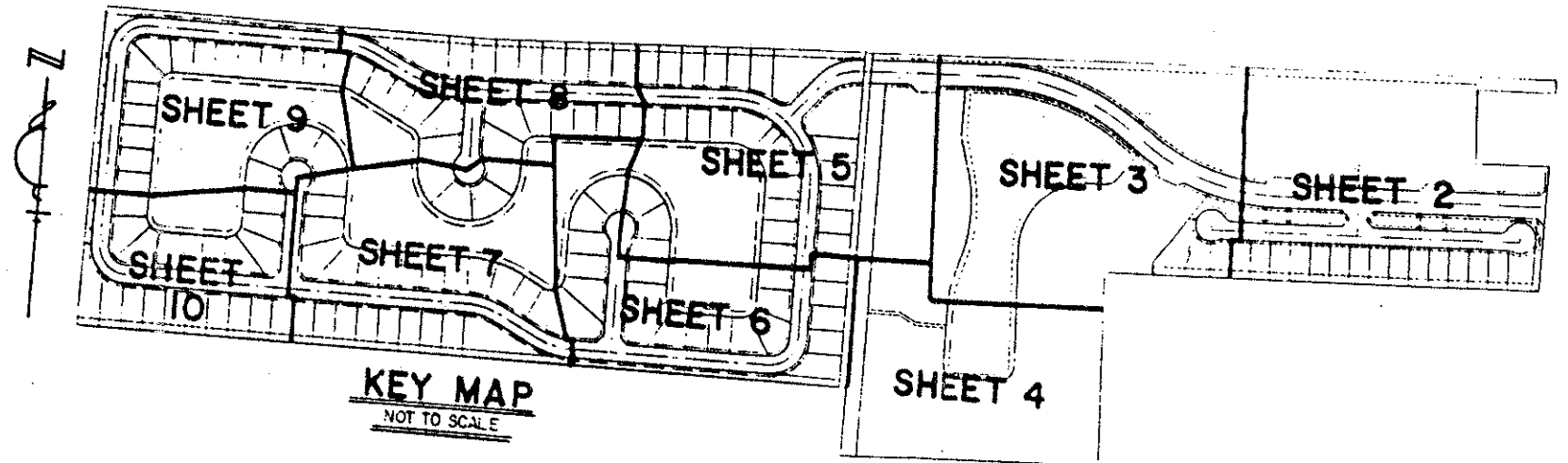


WHITEHORSE ESTATES

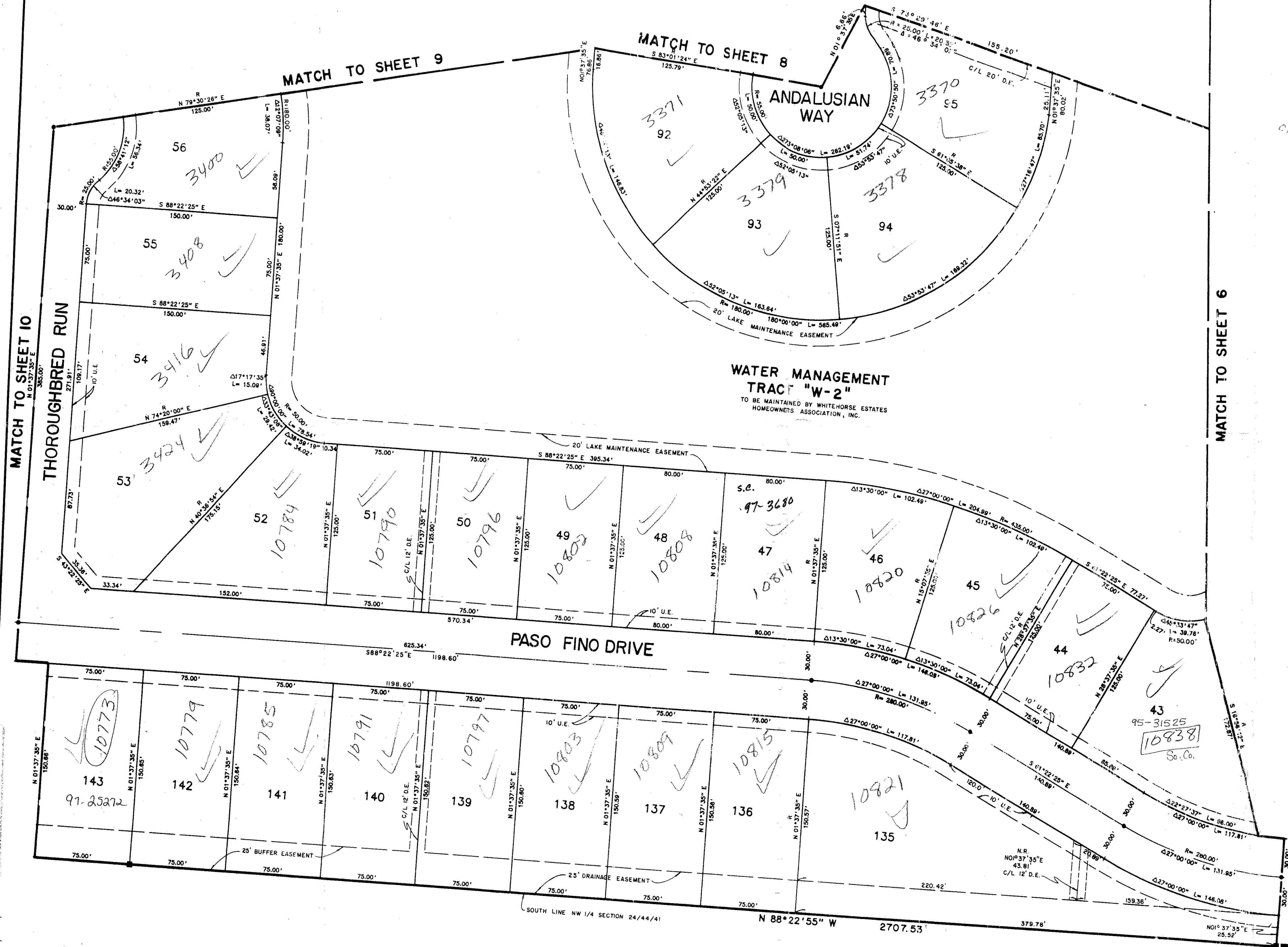
PALM VIEW LAKES
 A PLANNED UNIT DEVELOPMENT
 BEING A REPLAT OF A PORTION OF TRACTS 5 THRU 13 INCLUSIVE, BLOCK 26, PALM BEACH
 FARMS COMPANY PLAT NO. 3, PLAT BOOK 2, PAGES 45 THRU 54, INCLUSIVE, PUBLIC
 RECORDS OF PALM BEACH COUNTY, FLORIDA AND A PORTION OF THE NORTHWEST QUARTER
 OF SECTION 24, TOWNSHIP 44 SOUTH, RANGE 41 EAST, PALM BEACH COUNTY, FLORIDA.
 SHEET 7 OF 10
 JULY, 1994.

0517-001

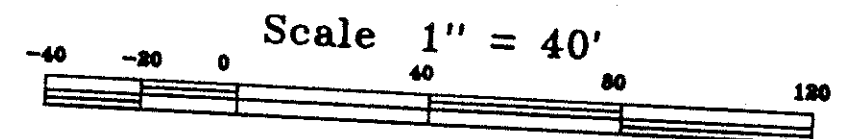
68



STATE OF FLORIDA
 COUNTY OF PALM BEACH
 This Plat was filed for record at _____
 M. this _____ day of _____, 19____
 and duly recorded in Plat Book No. _____
 on Page _____
 Dorothy H. Wilken, Clerk of the Circuit Court
 By _____ D.C.



PET. 86-100A
 5/2/4/G

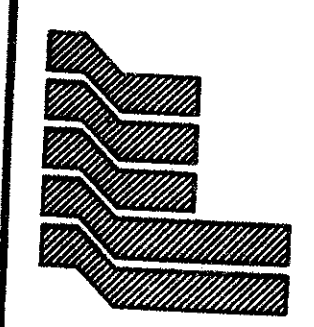


WHITE HORSE ESTATES
 73
 B
 63
 89-1041
 24/44/41
 73-736

0517-001

73/68

NOT PLATTED



Landmark Surveying & Mapping Inc.
 1850 FOREST HILL BOULEVARD
 PH. (407)433-5405 SUITE 100 W.P.B. FLORIDA

WHITEHORSE ESTATES